

A LETTER FROM OUR PRESIDENT, JANE WOLFE



Columbia FiberArts Guild (CFG) is a vibrant and spirited guild of the Northwest dedicated to helping members explore all types of fiber art. -CFG Website

I love seeing “vibrant and spirited” attributed to CFG. Every time I visit one of the subgroups, I see it in the delight of the various artists expressing themselves, showing and sharing their art with others.

Do you realize CFG has thrived for 55 years? When I talked with a former president, Sharry Olmstead, I found out that it started as an embroidery club and then expanded to cover all types of textiles. She enjoys the varied speakers and workshops because you can “learn from all different types of art.” CFG has grown and flourished because of its variety and commitment to evolving—a community that supports and encourages artists in developing their ability to express themselves. Our diversity as a guild—both in interests and talents—creates a vibrant and growing community that we can all be proud of.

I went to see the opening reception of High Fiber Diet at the Camas Library. I was awed at the talent that flourishes in this group. Marie Wolfe told about the upcoming March workshop with Natayla Khorover and how excited she is to learn about using all the different materials. I went home and signed up. Have you? I’ve invited Linda Lee, a fabulous book maker, to speak at our March 5th Surface Design meeting. If you see the book at the Camas Library, you will get an idea of the textile book you can make. Hope you’ll join us then.

A week ago I hosted a “Shop and Swap” at my home. It was so much fun to have some social time with other members. I’d like to see more events between our quarterly meetings so we can learn new ways to play and support each other.



Handmade Book by Linda Lee

What would you like to see more of? How can your Board support this guild in becoming a community filled with vibrancy, vitality and growth? Send your suggestions to jwolfe@quantumleaders.com.

QUARTERLY MEETING

March Meeting

Wednesday, March 13, 2024

Social Hour 9 AM
Meeting Begins 10 AM
Congregation Neveh Shalom
2900 SW Peaceful Lane,
Portland, OR 97239

Speaker: Natalya Khorover
Alternative Stitching Practices



March Workshop

Natalya Khorover

Point of View

March 14-15, 2024
10 AM to 4 PM
St Rita Catholic Church
10029 NE Prescott St.

SIGN UP

Natalya's art is an extension of her commitment to using recycled and repurposed materials, a lifelong advocacy. Her detailed works are nuanced and reimagined images inspired by the lines of the urban environment. A close examination of Natalya's art reveals delightful and unexpected combinations of materials as diverse as vintage lace, plastic sheeting, and candy wrappers, layered and collaged with machine and hand stitching. She strives to use materials which would be condemned to the landfill and chooses to use the unusual techniques of stitching and sewing to bring her artwork to life.

BUILDING COMMUNITY

CFG is embarking on a new initiative! We are excited to welcome other community artist guilds to join us at our quarterly meetings. Get to know a variety of textile and fiber artists at these social gatherings, which aim to introduce the community to new creative talents. Our venue at Congregation Neveh Shalom will be open from 9am to 2pm, with additional tables, chairs, and light refreshments provided. Feel free to bring a packed lunch to enjoy your afternoon. If you belong to other guilds or know of a guild that would like to visit us, please contact Jane Wolfe. Stay tuned for a special guest guild in March!



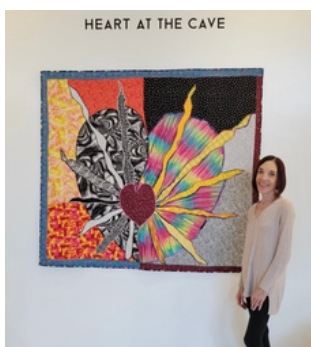
HAPPENING THIS MONTH



VOLUNTEER OPPORTUNITY

Hello. I am a local physician and founder of the nonprofit Northwest Narrative Medicine Collaborative. We are hosting a workshop in Portland, on Feb 21st called *Tell Your Story: A Communal Quilt Project*. It is being led by visiting artist Steve Prince steveprincestudio.com and we are looking for a few volunteers who might be willing to attend with their mats and rotary blades to support the participants of the workshop, which will center on stories of health and illness. More information about the workshop can be found here: nwnmcollaborative.org. I am happy to answer questions you might have. Thank you for considering. Sincerely, Elizabeth Lahti

ARTIST TALKS

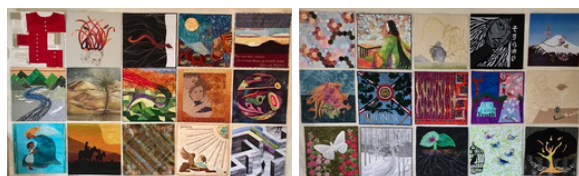


Karen Miller will be presenting *Katazome, Japanese Stencil Dyeing, a Textile Record of Natural History* at the Corvallis Academy for Lifelong Learning on February 22 at 9:30am. Watch on [Zoom](https://www.zoom.us). Information can be found at academyforlifelonglearning.org.

POET/WRITERS CHALLENGE

Eugene Textile Center,
2750 Roosevelt Blvd, Eugene, OR.
Monday - Saturday 10am to 5:30pm

For many years, an amazing woman from Japan organized fellow quilters from around the world to participate in a shared challenge. 30 quilters from each of three countries were asked to produce 50 cm square pieces sharing a common theme. The theme for this challenge from 2019 is World Poets and Authors. 30 writers were chosen, and 30 artists from each of the participating countries—Japan, France, and the United States—made artwork to honor these authors. Normally, all 90 of the quilts would be shown together at venues in each country, but the pandemic prevented that. The work was detained in Japan until December of 2023. These 30 pieces are the contributions of the American artists from Oregon and Washington. The show will be available for viewing the entire month of February.



Valerie Bledsoe will be presenting a brief artist talk at [Art at the Cave](#) in downtown Vancouver on February 17 at 1pm. She'll be speaking about her quilt *Labor of Love* which is part of the Art at the Cave exhibit. The show is on display through the month of February.



MEMBERSHIP

The Columbia Fiber Art Guild offers benefits to fiber artists including in-person meetings, classes and workshops, Zoom lectures, online exhibitions, and special interest groups. Members have access to a members-only portal on the website containing past newsletters, schedules, exhibition entry forms, and an events calendar. CFG provides a platform to network, learn, and collaborate with like-minded artists and build new friendships. At present, CFG has 141 members. If you have questions regarding membership, please contact Linda Hansen lindap_hansen@yahoo.com.

Join our Facebook Group to keep the conversation going

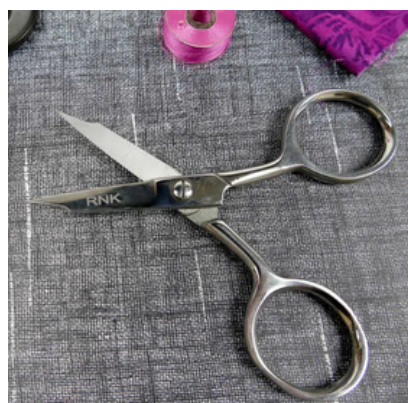


Welcome to our newest members

C.D. Moland

TIPS AND TRICKS BY GLENDA MAH, PRESIDENT ELECT

I just created a piece for an upcoming event sponsored by the World Shibori Network which will recognize the work of 98 year old artist Kay Sekamachi at the San Francisco Art Museum, Harvey Milk Gallery on March 12, 2024. sfomuseum.org. The piece could be no more than 2 x 2 x 2 inches or a variation of 8 cubic inches and but not more more 3" on one side. By special request, I was asked to recreate a shibori piece of a spider and its web, that I had created several years ago. That piece was 18 x 18 inches. Imagine trying to make a tiny spider and web! After literally 4 different iterations, I successfully managed to create something I was proud of and that I hoped she would like.



My secret and my hint for this month: [RNK precision point scissors](#)! I have every possible size and shape of small scissor to my shibori threads and designs for applique - my favorite being those little green ones by Karen Buckley and a lovely pair of Kai scissors. However, I found when cutting out my itty bitsy spider that even those scissors were not precise enough to let me get into the tiny little spaces my 1.5" shibori spider had, I managed to amputate a few legs before figuring this out. The RNK were amazing and I had them in my tool kit but not really used them. Seriously, if you do tiny precise applique or cutting you need a pair of these sweet scissors. That tiny little tip will save you from hours of anguish (especially over amputated spider legs).

SPECIAL INTEREST GROUPS

HAND STITCHING

Is handstitching a part of your fiber arts practice? If not, would you like it to be? Join us at our monthly Handstitching Group to share works in progress, tips and inspiration.

Meeting Dates and Time: Third Friday of every month 10am to 12pm

Meeting Location: West Linn Library in the Community Room (off the lobby entrance), 1595 Burns Street, West Linn. Updates can be found on our private [Facebook](#) group

Contact: Terri Wanke, terri.wanke@yahoo.com and Nanci Tangeman, nanci@nancitangeman.com, for more information.

SURFACE DESIGN

Surface Design is a group of fiber artists focused on all facets of applied design.

Meeting Dates and Time: first Tuesday of each month, January through June, August through November, no meeting in July and December 11am-1pm

Meeting Location: Vancouver Community Library 901 C Street Vancouver, WA 98660 in the Klikitat meeting room on the 4th floor.

Contact: Valerie Bledsoe vabledsoe@gmail.com or Marnie Murray marnie.murray@gmail.com.

CREATIVE WEARABLES

Meeting Dates and Time: 3rd Monday of the month (except December) 10am-12pm

Meeting Location: St Andrew's Presbyterian Church, 3228 SW Sunset Blvd, Portland, OR, with a \$2 meeting fee to help offset rental costs

Contact: Joyce Kelly, joycekellydesigns@gmail.com

Everyone is invited to stay in touch and share projects on our Facebook page at: [Creative Wearables Group](#)

HIGH FIBER DIET

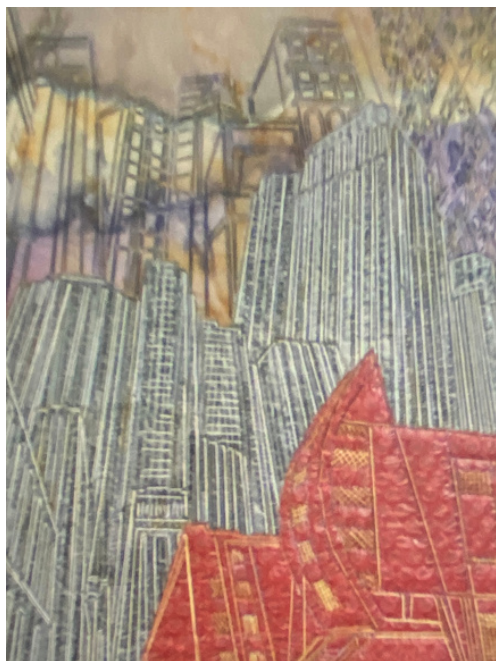
High Fiber Diet is excited to have A Different View on show at the Second Story Gallery in the Camas, WA, public library. We would love to have you see it. It is there through the end of February. Our next in person meeting will be April 13 at St Andrews Church. If you have been thinking about checking out HFD, that would be a great meeting to attend. We will be planning for our next year's show, A Sense of Place. The artwork for that show will be collected for jurying in the fall, so there is plenty of time to join in and create a piece or two to submit.

Meeting Dates and Time: April 9, May 14, July 9, Oct 8, and Nov 12 at 10:30am

Meeting Location: St Andrew's Presbyterian Church, 3228 SW Sunset Blvd, Portland, OR. \$10 membership fee per year.

Contact: Pam Pilcher pilcherpam@gmail.com

PROGRAMS



Reflections 5 by Natalya Khorover

Point of View

March 14 & 15, 2024

Natalya Khorover's workshop, will be here before you know it. Natalya has been committed to both environmental action and artistic beauty. She teaches mixed media techniques using recycled and repurposed materials.

This workshop will challenge you to look at our manmade world from different perspectives. You will use your imagination to explore the junctures of lines, simple curves and dynamic angles around us to build powerful compositions using the perspectives you have captured that speak directly to the unique way in which you see the world.

Register



Patterns and Prints by Maria Shell

Patterns and Prints

September 12-14, 2024

Maria Shell will be giving her workshop, Patterns & Prints. In this workshop students explore the basic concepts of how to piece prints—stripes, pointy shapes, polka dots, and plaids are all simple pieced prints. From there students will move into more complex piecing exercises where they research patterns and prints that resonate with their own individual artist aesthetic and attempt to discern methods for piecing them. This workshop takes patchwork piecing to a whole new level that encourages students to develop their own patterns and prints.

Maria Shell's work is grounded in the tradition and craft of American quilt making. She strives to take the classical components of a traditional bedquilt and manipulate them with the hope of creating surprising combinations of pattern, repetition, and color for the viewer.

Register

ONLINE EXHIBITS

Congratulations to the artists juried into *Paint and Stitch*. View the gallery [here](#).

Summer 2024 Online Exhibition Theme

TEXT

Call for entries opens June 1

TEXT Challenge

Did you hear about the next CFG online gallery exhibit theme? It's **TEXT**. **How do you use TEXT in your fiber art? Do you want your viewer to be able to read it or do you use TEXT for emphasis or for texture in the background? Do you emphasize words or just letters and 54967s? I don't usually use T E X T so this theme gives me the opportunity to expand my practice and add another tool to my toolbox. Won't you join me? Submissions due throughout June. Stay tuned for more information in newsletters this spring. Please refer ?s to Jill at hoddick@up.edu**

OUTREACH

We are on the lookout for new opportunities within the community. If you are aware of organizations, causes, or charities that could benefit from our support, please get in touch with our Outreach Coordinator, Karin Graves. Your assistance is greatly appreciated. Karinagraves2@frontier.com



SHOW AND TELL



Oceanic Fantasyland, detail
Galadriel Breezy

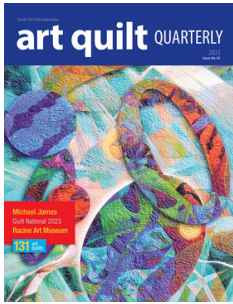


Southwestern Exposure
Jill Hoddick



Basilisk Lizard
Sue Redhead

MEMBERS IN THE SPOTLIGHT



JUDITH QUINN GARNETT

CFG member Judith Quinn Garnett is featured in the latest Art Quilt Quarterly from SAQA. The author notes “[h]er work is a textured portfolio alive with movement and color that allows the viewer to enter her world and willingly linger.” The magazine can be downloaded [here](#).

Judith’s heated painting *2050* made from plastic bags, party table cloths, and garden netting has been selected by Art Fluent for its show “Aqueous” now visible online at [art-fluent.com](#). This show features all types of works — from painting and sculpture to photography and fiber.



KATHIE KERLER

Kathie Kerler’s artwork *Terra I* has been juried into the SAQA exhibit “Abstractions: Textural Elements”. The piece measures 38.5” x 27.5” The exhibition will open in Heidelberg, Germany in September 2024.



LINDA HANSEN

Linda Hansen’s fiber art *Fuchsia Falls*, is featured at Art at the Cave. It will be exhibited all month as part of the Heart of the Cave show.

VALERIE BLEDSOE

Valerie Bledsoe’s art quilt, *Labor of Love*, is also included in the Heart at the Cave show at the Cave gallery.



CLASSIFIEDS

Each CFG member is allowed one free advertisement per year.

**FOR
SALE**

Kromski Loom

27.5 x 24 x 30 inches

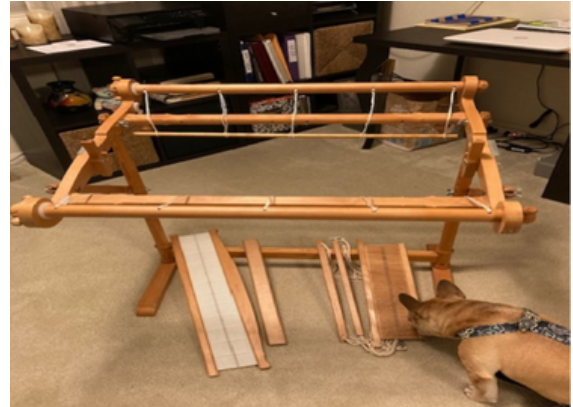
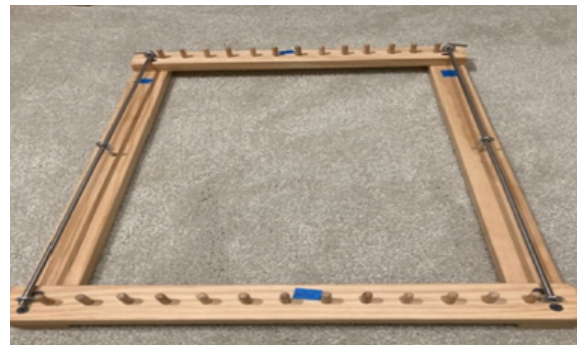
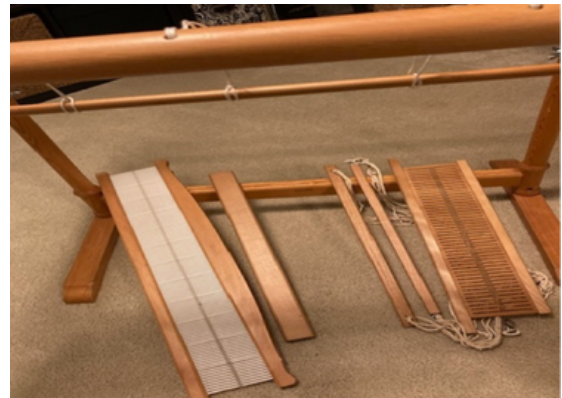
Asking \$300

Contact:

Beri Trestrail

360-241-4091

Beribeee@hotmail.com



HOW TO CONTACT US

Reports for Members

[Minutes of December 2023 CFG Quarterly Meeting](#)

[Minutes of February 2024 CFG Board Meeting](#)

[February 2024 Treasurer's Report](#)

Event Calendar Submissions

CFG's [calendar of events](#) is found on our website. Submissions for upcoming events such as small group meeting information, exhibit dates and locations, classes, workshops and gallery openings may be sent to Terri Wanke, terri.wanke@yahoo.com.

Newsletter Submissions

Please send items for publication in the newsletter to:

columbiafiberartsnews@gmail.com. Please be sure to include JPG image files and PDF documents when applicable. Links to specific artist websites, exhibitions and galleries are encouraged. Submissions may be edited for clarity and space.

The newsletter is published seven times a year: November, January, February, April, May, July/August, October. Deadline for articles is around the 10th of the month of publication and will be detailed in the email reminder for articles.

CFG Board Meetings

Meetings are held monthly on the first Monday when there is no quarterly meeting and are open to the membership to attend. Contact the President for more information.

Committees are: Exhibits, Membership, Newsletter, Outreach, Programs, Publicity and Webmaster. Minutes of meetings are posted in the CFG Newsletter.

2023-2024 Executive Board & Committee Chairs

President-----Jane Wolfe

President Elect-----Glenda Mah

Past President-----Susan Allen

Secretary-----Linda Dyer

Treasurer-----Beth Wells

Online Exhibits-----Jill Hoddick

Membership-----Linda Hansen

Newsletter-----Valerie Bledsoe

Outreach-----Karin Graves

Program-----Laura Lehrhoff, Marnie Murray

Program Elect-----Valerie Bledsoe, Margaret Blake, Terri Wanke

Publicity-----

Webmaster-----Doug Garnett & Judith Quinn Garnett